

THE RANGE ROVER

ACCESSORIES



GO BEYOND

2010 MODEL YEAR



BY APPOINTMENT
TO HER MAJESTY THE QUEEN
MANUFACTURERS OF
LAND ROVER VEHICLES
LAND ROVER, WARWICK



BY APPOINTMENT
TO HIS MAJESTY THE DUKE OF EDINBURGH
MANUFACTURERS OF
LAND ROVER VEHICLES
LAND ROVER, WARWICK



BY APPOINTMENT
TO HIS MAJESTY THE PRINCE OF WALES
MANUFACTURERS OF
LAND ROVER VEHICLES
LAND ROVER, WARWICK

IFC SEE SEPARATE COVER DOC

The new 2010 Range Rover stands alone as the ultimate, supreme luxury four-wheel drive vehicle. It stands enhanced, through the evolution of its exterior design, further extends its leadership with the world's finest interior and increases its capability yet again. This is your opportunity to make the new 2010 Range Rover your Range Rover by adding these exclusive finishing touches. Accessories bring even more style, capability and individuality to a vehicle. Importantly, most accessories can be added at any stage during your Range Rover's life. Please ask your Land Rover Dealer for the details. The new 2010 Range Rover won't be complete until you've made it yours.

Wheels

Stylish designs for extra individuality

PAGES
2-3

Exterior styling

Tailor the Range Rover to more personal tastes

PAGES
4-9

Carrying and towing

Sometimes even the Range Rover requires added capacity

PAGES
10-13

Interior styling

Luxury, practicality and the latest technology

PAGES
14-18

Sustainability

PAGES
22-23

A set of striking alloy wheels for the new 2010 Range Rover can add that dash of personalisation. A number of unique designs have been created to surpass the most demanding requirements, while extreme winter conditions are taken care of with a snow traction system and mudflaps.



20 inch V-Spoke Alloy Wheel - Sparkle Silver Finish*
LR008766
Rim only

Recommended Tyre:
Continental Conti Cross UHP 255/50 R20 109V AT-S

Centre Cap
Sparkle Silver Finish - RRJ500030WYS**
High Gloss Silver Finish - RRJ500030WYT**



20 inch 10-Spoke Alloy Wheel - Sparkle Silver Finish*
LR010666
Rim only

Recommended Tyre:
Continental Conti Cross UHP 255/50 R20 109V AT-S

Centre Cap
Sparkle Silver Finish - RRJ500030WYS**
High Gloss Silver Finish - RRJ500030WYT**



20 inch 10-Spoke Alloy Wheel - Polished Finish*
LR017926
Rim only

Recommended Tyre:
Continental Conti Cross UHP 255/50 R20 109V AT-S

Centre Cap
Bright Polished Finish - RRJ500060WYU**



20 inch 6-Spoke Alloy Wheel – Diamond Turned Finish*
LR012835
Rim only

Recommended Tyre:
Continental Conti Cross UHP 255/50 R20 109V AT-S

Centre Cap
Bright Polished Finish - RRJ500060WYU**



Snow Traction System
LR005737
For front 20 inch wheels only
Snow Chains
VUJ000020 (not shown)
For rear 18 and 19 inch wheels only



Front Mudflaps
CAS500060PMA
Compatible with deployable side steps.



Rear Mudflaps
CAT500070PMA

*Must be ordered as a set of five wheels per vehicle.
**Black/Silver Land Rover Badge.

Contact your Land Rover Dealer for more information.

Please note: When choosing vehicles fitted with specific wheel and tyre combinations or optional wheels and tyres, your intended use of the vehicle should be considered. Wheels with larger diameters and lower profile tyres will offer benefits in road holding and handling, but may be more vulnerable to damage in some off-road conditions, please discuss your requirements with your Land Rover Dealer when selecting your vehicle and specification.

The Range Rover's elegant lines can be tailored to meet more individual tastes with a number of uniquely styled exterior accessories. Deployable side steps aid entry and exit, as well as roof loading. They are automatically activated when the doors are opened and then stowed as the doors are closed. Side protection tubes are available in stainless steel and black finishes, while a bright finish mirror kit also adds extra sophistication.



Fixed Side Steps
VUB503860
Includes integrated Front Mudflaps.



Deployable Side Steps (deployed)

VPLMP0014 (shown left)

This smart, practical product helps ease entry and exit to and from the vehicle. Neatly stowed under the sills, the side steps automatically deploy as soon as a door is opened or by using the key fob then stow when the door is closed. The side steps are sensitive to obstructions and will not deploy in off-road or low range settings. Automatic mode can be overridden to allow access to the roof when the doors are closed. The deployable side steps are compatible with front mudflaps and feature a Range Rover branded tread mat.

Electronic Control Unit (ECU)

VPLMP0026

Wiring Harness

VPLMV0023

Electronic Control Unit (ECU) and Wiring Harness must be ordered with deployable side steps.



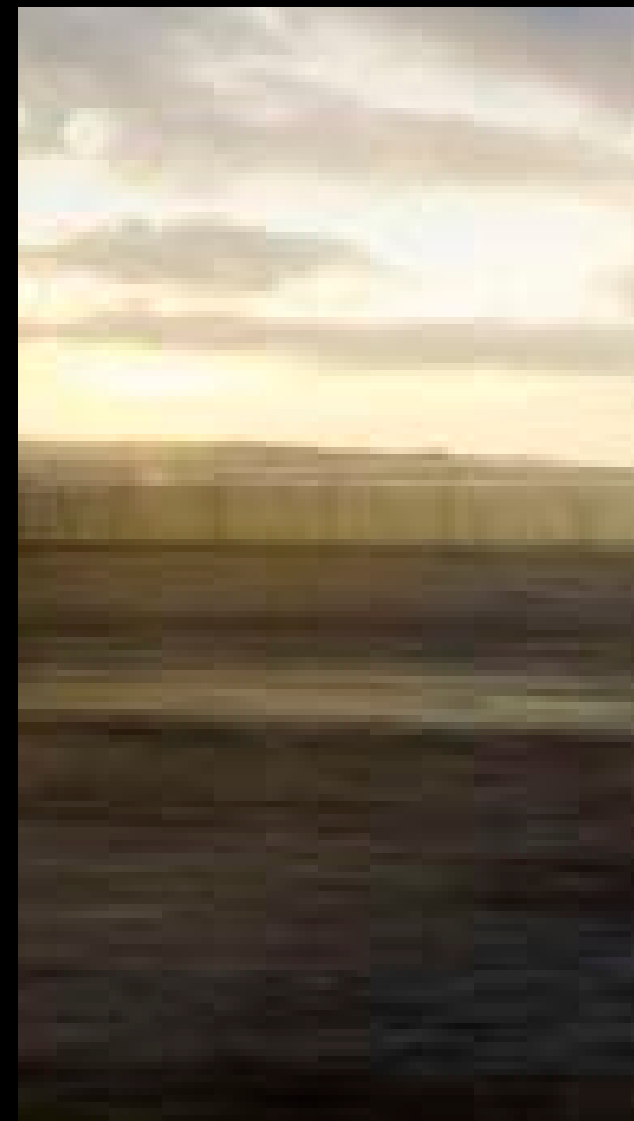
Deployable Side Steps (stowed)



Side Protection Tubes - Stainless Steel
VUB001230
Can be fitted with or without Front Mudflaps.



Side Protection Tubes - Black Steel
VUB002510
Can be fitted with or without Front Mudflaps.





Bright Finish Mirror Kit*
VPLMB0041 - (Upper)

Wind Deflectors
VUB000610

*Available September 2009



Bright Finish Power Vents
VUB503650





Roof Rails and Crossbars
 CAB000040PMA
 Adjustable position crossbars included for carrying all Land Rover roof mounted accessories featured. Lockable for security. Load capacity 91.6kg
 Vehicle height when fitted 1963mm.



Sports Bars
 VUB502790
 Fixed position crossbars for carrying Land Rover roof mounted accessories. Easily removed when not in use. Aerodynamic profile. Load capacity 96.2kg
 Vehicle height when fitted 1938mm.



Aqua Sports Carrier*
 CAB500030
 Carries one surfboard or sailboard and mast, or one canoe or kayak. Load capacity 45kg.



Luggage Box*
 VPLDR0003
 Lockable for security. Opens from both sides. External dimensions: 1,600mm long, 960mm wide, 410mm high. Volume 450 litres. Load capacity 60kg.

Despite the Range Rover's impressive load carrying abilities, extra capacity is sometimes required. Eight specialised roof carriers are available to handle a variety of items, from sailboards to suitcases. There is also a rear-mounted bike carrier. Should even greater load carrying capabilities be required, two different tow bar styles are available.



Luggage Carrier*
LR006848

Load capacity 87kg on Sports Bars, 82.4kg on Roof Rails and Crossbars.



Ski and Snowboard Carrier*
LR006849

Lockable for security. Carries four pairs of skis or two snowboards. Incorporates slider rails for easy loading. Load capacity 36kg.



Sports Box*
VPLDR0002

Can be mounted on either side of the vehicle for kerbside opening in any country. Internal retention system for skis or other long loads. Lockable for security. External dimensions: 2,300mm long, 620mm wide, 390mm high. Volume 400 litres. Load capacity 60kg.



Expedition Roof Rack
CAB500070PMA

Load capacity 81kg. Vehicle height when fitted 1,988mm.



Ratchet Strap
CAR500010

Tie strap for securing items onto roof racks. 5m long, 20mm wide.



Lashing Eye Kit
VUB503160

Six additional tie down points for use with T-slots on Roof Rails and Crossbars or Sports Bars.

*Roof Rails and Crossbars or Sports Bars are required for all Land Rover roof mounted accessories. Objects placed above the roof mounted satellite antenna may reduce the quality of the signal received by the vehicle and could have a detrimental effect on the navigation and satellite radio system, if fitted.



Quick Release Tow Bar
 VUB000730
 Easily removed.
 Lockable for security.
 3,500kg trailer load capacity
 (250kg trailer nose load).



Multi-Height Tow Bar
 VUB000720
 Offers three different towing
 height options. Lowest tow ball
 position 360mm from ground.
 3,500kg trailer load capacity
 (250kg trailer nose load).



12N/12S Type Electrics*
 VPLMT0006
 Supplied as a combined kit.



13 Pin Type Electrics*
 VPLMT0007

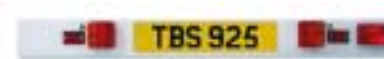
TOWING ACCESSORY OPTIONS

1. Ensure your vehicle has a Tow Bar Armature fitted VUB503960 (shown right)
2. Choose which Tow Bar suits your requirements
 - a. Quick Release Tow Bar VUB000730
 - b. Multi-Height Tow Bar VUB000720
3. Choose which electrics kit suits your requirements
 - a. 12N/12S Type Electrics VPLMT0006*
 - b. 13 Pin Type Electrics VPLMT0007*
4. Select any further options
 - a. Bike Carrier VTG500020
 - b. Lighting Board STC8153

Please speak to your Land Rover Dealer for further details.



Tow Bar Armature
 VUB503960
 Towing subframe bolts to vehicle chassis.
 Accepts Quick Release Tow Bar, Multi-Height
 Tow Bar and Bike Carrier.



Lighting Board*
 STC8153
 4 metre cable plugs into 'N' Type Electrics socket.

Bike Carrier
 (shown right)
 VTG500020
 Fits directly into Tow Bar Armature.
 Holds two bicycles. Upper and lower
 tailgate can be opened with carrier
 in place. Lighting Board (STC8153)
 is required in certain countries.
 Trailer cannot be towed at the same time.

***Please note:** These accessories are not suitable for Caravans, Trailers or Lighting Boards fitted with rear mounted LED Lamp Kits.



Inside the Range Rover luxury and practicality are afforded equal importance. Premium carpet mats are available in a number of different colourways. Loadspace protectors and waterproof seat covers safeguard the vehicle's interior from the effects of heavier usage, while two styles of cargo barrier assist in keeping loose objects secure. Also satisfying the high standards set by the Range Rover is a range of child seats which helps ensure that young occupants remain happy and comfortable.



Cargo Barrier Half Height
VUB002120
Easily removed.
Retains cargo according to EC regulation 17.



Load Retention System
VUB000700
Includes Floor net and two ratchet straps.
Strap length approximately 2 metres. Luggage net
approximately 1m x 0.35m



Side Luggage Nets Pair
VUB000710



Gun/Security Box
STC8018AB
Heavy gauge steel with 2 high security locks.
Internal Dimensions:
870mm long, 190mm wide, 190mm high

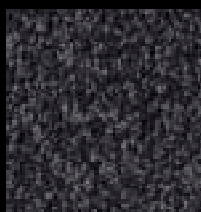
Installation Kit
(not shown)
VUB000750



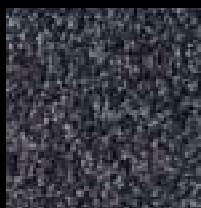
Cargo Barrier Full Height
VUB503890
Easily removed, incorporates
useful integral ski hatch.
Retractable Loadspace Cover
can still be fitted.
Complies with EC regulation 17.
Not compatible with vertical blind
and Loadspace Protector.

Premium Carpet Mat Set
Deep pile carpet with
waterproof backing.

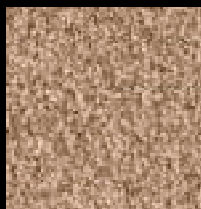
Arabica
(shown right)
RHD LR008844
LHD LR008845



Jet
RHD EAH500280PVA
LHD EAH500290PVA



Navy
RHD EAH500280JMN
LHD EAH500290JMN



Sand
RHD EAH500280SUN
LHD EAH500290SUN





Loadspace Mat
LR003894
Protects carpet from general dirt.
Waterproof with retaining lip and non-slip surface.

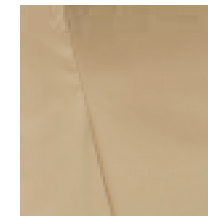


Loadspace Protector
EBF000040
Complete with anti-slip mat (not shown). Easy access to tie-down points via removable grommets.



Flexible Loadspace Protector
VPLMS0017
Heavy duty fabric protects loadspace up to window height.
Includes protective gloves.

Rubber Mat Set
RHD EAH500320PMA
LHD EAH500330PMA



Waterproof Seat Covers Sand
Front Pair, Standard Seats
HAL500050SUN
Front Pair, Comfort Seats
HAL500060SUN
Rear Seat Set
HPE000380SUN

Waterproof Seat Covers Aspen
Front Pair, Standard Seats
LR005244
Front Pair, Comfort Seats
LR005245
Rear Seat Set
HPE000380LUP

Protects upholstery from mud, dirt and wear and tear. Machine washable. Includes headrest and armrest covers. Comfort Seats allow use of rear seat entertainment screens. Colours shown may differ from the actual product.



**Land Rover Watch
Stolen Vehicle Tracking System**

Advanced System
(not shown)
VPLDV0016

Driver Recognition Tag
(not shown)
VPLDV0015

Standard System
(not shown)
LR003082

Installation Kit
(not shown)
VPLMV0025

Consult your Land Rover Dealer
for further details.

Please note: Land Rover Watch
is not available in all markets.

TOURING ACCESSORIES

Bulb Kit (not shown)
A selection of essential bulbs are
a legal requirement in certain countries.
VUB001062 Supercharged

Fire Extinguisher
KDB500060 (not shown)
1kg powder extinguisher
with mounting bracket.

Warning Triangle
KCC500021 (not shown)
Vital in emergencies and a legal
requirement in certain countries.

First Aid Kit
STC7642 (not shown)

Tow Strap
STC8919AA (not shown)
Includes storage bag that can be attached
as a warning flag to the strap.
3,000Kg maximum load capacity.



BABY-SAFE plus Infant Carrier*
VPLMS0007
For babies 0-13kg
(approximately 12-15 months).
Includes sun/wind canopy.
Padded machine washable cover.
Rearward facing on rear seat.
Rear outboard seating position only.
Requires BABY-SAFE ISOFIX Base
VPLMS0008 (shown below).



DUO plus Child Seat*
LR006637
For children 9-18kg
(approximately 9 months – 4 years).
One-pull, height-adjustable
headrest and harness.
Padded machine washable cover.
Forward facing on rear seat.
Includes top tether.



KID plus Child Seat*
LR004940
For children 15-36kg
(approximately 4 – 12 years).
Seat belt guides correctly position
seat belt. Three adjustable width
positions. Improved side impact
protection. Padded machine
washable cover.



BABY-SAFE ISOFIX Base
VPLMS0008

*Children are safer when correctly
restrained in the rear of a vehicle.
Note: All seat cover patterns and
colours are periodically updated.



Electric Cool Bag
VUP100140L
Powered by the 12 volt auxiliary socket.
Thermostatically controlled temperature.
Easy clean interior surfaces.
Height 380mm, length 380mm, width 220mm
Volume 14 litres.









landrover.com/ourplanet

Our commitment is to a sustainable future. Everything from the design of our vehicles and the way we build them, to how and where we use them and, at the end of their life, to how they can be safely disposed of, Land Rover is committed to a sustainable future. We're committed to reducing our impact on the environment and are working in four key areas.

■ e_TERRAIN TECHNOLOGIES.

In 2007 we announced a joint investment into new technologies to improve the environmental performance of our vehicles. This joint investment now stands at £800m. Building on the innovation of the Land_e concept, the first of these technologies is the Stop/Start engine in our diesel manual Freelander 2. In 2008 we revealed our new concept vehicle, the LRX; a Land Rover in body and spirit but conceived as a hybrid 2.0 litre diesel with potential CO₂ emissions of 120g/km.

■ SUSTAINABLE MANUFACTURING.

World class manufacturing facilities. Certified to ISO14001 since 1998. Our manufacturing facilities at Solihull and Halewood have reduced emissions by around 4 percent year on year, over the last 5 years. Our TDV6 and TDV8 engines are assembled in the Dagenham Diesel Centre which is powered by wind turbines. Total energy used in manufacturing each vehicle has been reduced by 19 percent since 2002. While water use per vehicle has been cut by 14 percent in the same period. We're also offsetting all CO₂ emissions by the manufacturing assembly of Land Rover vehicles at both plants. Partnered with specialist organisation Climate Care, our offset projects include a wind farm in China and hydro electric generators in Tajikistan. In addition, Land Rover vehicles are now designed to be 85 percent recyclable with all current models meeting the European End of Life Vehicles Directive. Sustainable and recyclable materials play an important role too: Freelander 2 contains 10 percent recycled and 10 percent renewable materials.

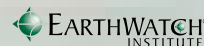
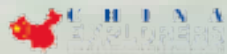
CO₂ OFFSETTING in 2006, in the UK, we launched a pioneering programme for customers, independently administered by Climate Care, to offset CO₂ emissions for the first 45,000 miles (72,000 km) of all new Land Rovers. This programme is being rolled out progressively to other countries around the world. We're also the first automotive company to offset 100 percent of our manufacturing assembly CO₂ emissions.

GLOBAL CONSERVATION AND HUMANITARIAN PROJECTS.

Land Rover vehicles are used by conservation and humanitarian organisations worldwide and are often first choice for difficult tasks. Organisations include the Born Free Foundation, Biosphere Expeditions, Royal Geographical Society (with IBG), China Exploration and Research Society and Earthwatch Institute. Our projects are diverse, ranging from an initiative to help with the protection of rare wolves in Ethiopia, to a project funded by our CO₂ offset programme which provides efficient cooking stoves to rural parts of Uganda.

Our planet. We take our responsibility to our planet very seriously. Our vehicles are designed for purpose. As part of our Fragile Earth policy Land Rover has actively promoted responsible off-road driving since 1990. Our Experience Centres teach drivers to understand the full potential and unique breadth of capability of their vehicles while reducing impact on nature and the environment, in a wide range of activities.

To find out more, and to see our progress, visit www.landrover.com/ourplanet



www.landrover.com

All Land Rover Approved Accessories fitted by a Land Rover Dealer within one month or 1,000 miles/1,600 kilometres (which ever occurs first) of the handover of a new vehicle will benefit from the same warranty terms and period of cover as the vehicle warranty. Accessories purchased outside of these parameters will be subject to 12 month unlimited mileage warranty. All Land Rover Approved Accessories are rigorously tested to the same exacting standards as those applied to our vehicles. Performance in extreme hot and cold temperatures, corrosion resistance, impact and airbag deployment highlight some of the exhaustive product testing carried out to ensure accessories are both durable and importantly, continue to comply with current legislation.

All our accessories are designed to be an integral part of Land Rover vehicles. While many items such as roof carriers are simple to fit, some products require specialist tools and diagnostic equipment to ensure correct integration with the vehicle structure and electrical systems.

This publication is intended for international usage and whilst Land Rover take the utmost care in ensuring that all details in the publication are correct at the time of going to press, we are constantly striving for improvement and therefore reserve the right to alter specifications and equipment without notice. Details of specifications and equipment are also subject to change to suit local market conditions and requirements, and not all products are available in every market. Some vehicles are shown with accessories or optional equipment fitted. These products vary from market to market, please consult your Land Rover Dealer who will be pleased to advise you on current specifications. Distributors and Dealers are not agents of Land Rover and have absolutely no authority to bind Land Rover to any express or implied undertaking or representation.



Please recycle this brochure after use

LAND ROVER Registered Office:
Banbury Road, Gaydon, Warwick CV35 0RR, United Kingdom.
Registered in England and Wales: Number 4019301
www.landrover.com

© Land Rover 2009. Publication Number: LRML XXXX/09

IBC SEE SEPARATE COVER DOC