

DEFENDER

ACCESSORIES



GO BEYOND



GO BEYOND



Land Rover is the world's leading four-wheel drive specialist. And Defender is our toughest, most capable vehicle.

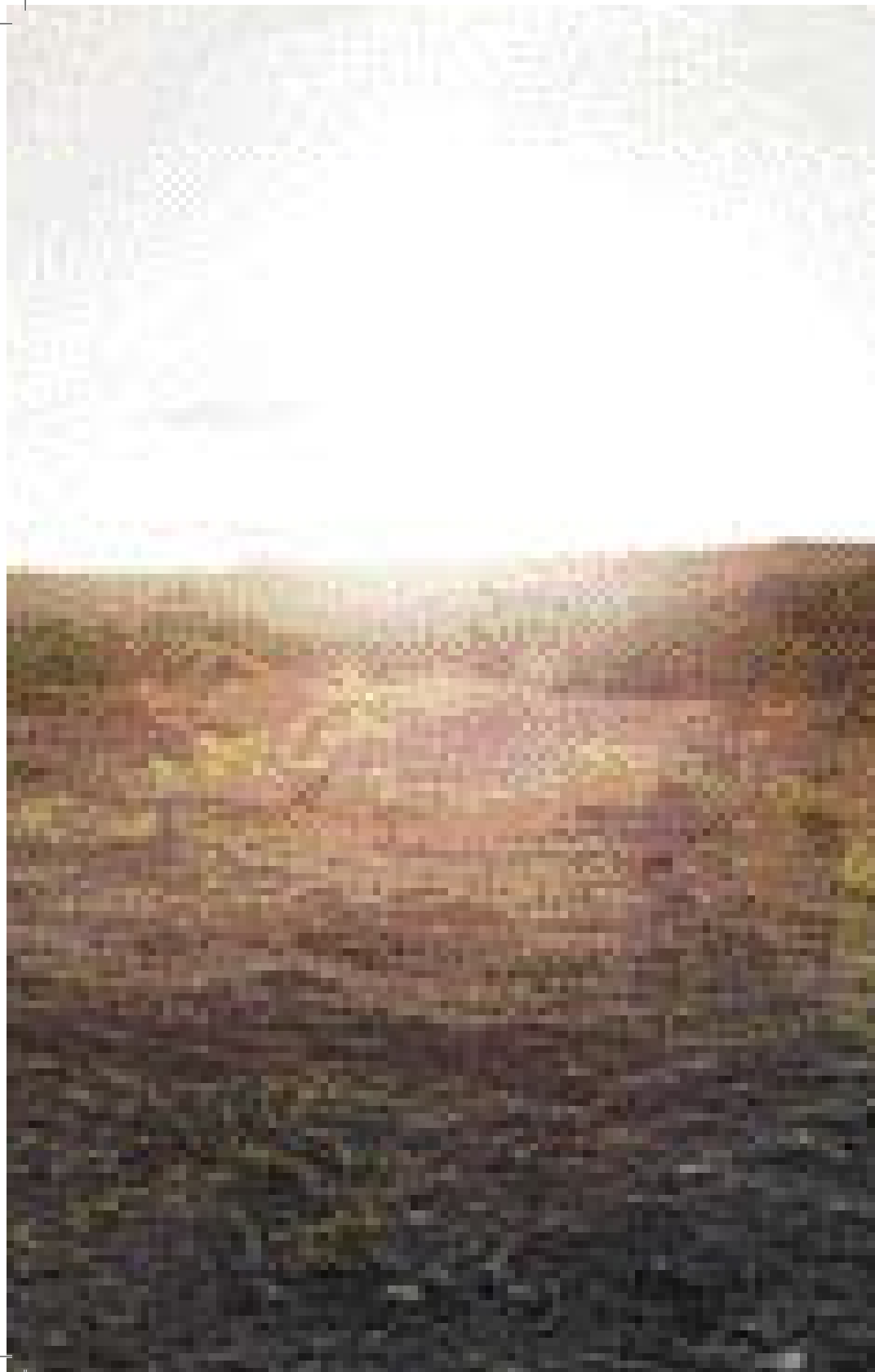
Defender is the product of a controlled evolution - principles that were revolutionary sixty years ago endure and have been built upon.

Now with a Four Bar Front Grille, new Side Protection Runners and 16 inch 5-Spoke Dual Finish Alloy Wheel design, the 60th Anniversary

SVX model takes advantage of more accessory options than ever before.

Should owners want to tailor Defender to specific needs, they can exploit a range of practical, proven accessories. Accessories that are tough, versatile and every bit as good looking as Defender. These accessories can be added at any stage in a vehicle's life - not just when Defender is new. From a new Front Lighting Park and Moulding Kit, a Raised Air Intake, snow chains to winches, roof rack systems and an Audio Connectivity System. Whatever the task, Defender takes it in its stride with Land Rover Approved Accessories.





Accessory selections
Adventure. Sports. Utility

PAGE 5

Wheels
Stylish designs for extra individuality

PAGE 11

Exterior styling, protection and lighting
Accommodating more personal tastes and uses

PAGE 15

Carrying, towing and winching
Added capacity and versatility

PAGE 23

Interior styling
Comfort, convenience and the latest technology

PAGE 33

Sustainability

PAGE 39



ADVENTURE ACCESSORIES SHOWN

- A-Frame Protection Bar
- Boost Alloy Wheels
- Chequer Plate Protection Kit
- Expedition Roof Rack
- Front and Rear Lamp Guards
- Front Mudflaps
- Undershield
- Wing Top Protectors
- 9.5ti Electric Winch.



The Land Rover Experience is specially designed to better acquaint you with the unique capabilities of Defender at any one of our prestigious Land Rover Experience Centres. Breathtaking scenery and a hands-on introduction to the true off-road capabilities of your vehicle and its accessories. From steep and slippery inclines to swollen streams. All under the guidance of our off-road experts. For more information please visit www.landroverexperience.com



**The Essential Guide to
Off Roading DVD**
LRO 1537

This provides a comprehensive guide on how to tackle most types of terrain, including snow and sand. It focuses on the safe and environmentally responsible way to tackle many of the obstacles you are likely to encounter both at home and abroad. Length 40 minutes. For more information go to www.landrovergearshop.co.uk



Adventure. Out there, in some of the remotest places in the world, survival can depend on being able to push a Defender to the absolute limit. And it's Land Rover Approved Accessories that help make it happen and extend Defender's capability still further.



SPORTS ACCESSORIES SHOWN

- Aqua Sports Carrier
- Sports Bar System
- 16 inch 5-Spoke Alloy Wheels - Dual Finish
- Front Mudflaps
- Side Protection Runners - New Style
- Raised Air Intake
- Ribbed Aluminium Undershield
- Four Bar Front Grille
- Front Lighting Pack and Moulding Kit.

Sports. Sometimes even Defender requires the extra capacity to carry the most awkward loads. This can be particularly true of sports equipment. Sports bars give Defender the flexibility to deal with heavy kit, while the Aqua Sports Carrier makes light, easy work of kayaks, surfboards and windsurfers.





Utility. Never more at home than when it's in a demanding work environment,

Defender can be tailored to cope with specific needs with accessories that can add extra protection in potentially hazardous conditions.

UTILITY ACCESSORIES SHOWN

- A-Frame Protection Bar
- 16 inch Boost Alloy Wheels
- Wing Top Protectors
- Chequer Plate Protection Kit
- Front and Rear Lamp Guards
- Front Mudflaps
- Aluminium Undershield





Wheels. Nothing personalises a Defender and has as much effect on the external appearance as a set of alloy wheels. They are not just lighter than the equivalent standard wheels, they are practical and are tested to perform

far beyond most needs. Other practical accessories include mudflaps to keep the vehicle cleaner in extreme conditions and Snow Chains for the severest weather. Also available is a new 16 inch 5-Spoke Dual Finish Alloy wheel. Locking Wheel Nuts and Spare Wheel Covers add security and aesthetic appeal.





Vinyl Wheel Cover

Protect your spare wheel from mud and dirt with this premium quality wheel cover.

Features include:

- Premium quality padded vinyl
- Distinctive Land Rover logo
- Vinyl Wheel Cover - 205 and 600 R16 tyres (not shown) STC8485AA
- Vinyl Wheel Cover - 265 R16 tyres (not shown) STC8487AA
- Vinyl Wheel Cover - 7.5 R16 tyres (not shown) STC8488AA.



Moulded Wheel Cover

STC7889
Styled spare wheel cover fits all wheel sizes.

Features include:

- Tough moulded cover
- Distinctive Defender logo.



Locking Wheel Nut Kit

Wheel nut kits are required for all upgrades from steel to alloy wheels and include a full kit of locking and plain wheel nuts. Manufactured to demanding safety standards, locking wheel nuts provide added security at low cost for your valuable wheels and tyres.

Locking Wheel Nut Kit for steel wheels (not shown) RTC9535

Locking Wheel Nut Kit for alloy wheels - 265 R16 tyres (not shown) STC7623

Locking Wheel Nut Kit for alloy wheels - 205 R16 and 235 R16 tyres (not shown) STC8843AA

Stainless Steel Finish Wheel Nut Kit for alloy wheels (not shown) RTC9563AA

Front Mudflaps

RTC9479

Heavy duty moulded mudflaps reduce spray and help protect vehicle paintwork.

Mudflaps, front pair for 90 and 110 models only.



16 inch 5-Spoke Alloy Wheel – Dual Finish

VPLDW0001YCM

Features distinctive embossed Defender branding

Tyre size 235/85 R16 116Q

Recommended tyre manufacturer: General Grabber TR
Defender 90 and 110 only with standard suspension



16 inch Deep Dish Alloy Wheel

ANR3631MNH

Tyre size 235/85 R16 116Q

Recommended tyre manufacturer: General Grabber TR

Defender 90 and 110 only with standard suspension
Compatible with pre-07MY vehicles only



16 inch Boost Alloy Wheel

Pre-04MY RRC110870MNH

04MY onwards RRC502000MNH

Tyre size 235/85 R16 116Q

Recommended tyre manufacturer: General Grabber TR
Defender 90 and 110 only with standard suspension



Snow Chains

Snow Chains give improved steering and braking control on snow and ice, when fitted to front wheels (can also be fitted to rear wheels when necessary).

Easy-fit design, manufactured from high quality hardened galvanised steel, the chains are supplied in a tough vinyl carrying bag for storage when not in use.

Snow Chains - 235/65 and 265/75 R16 tyres
STC8518

Snow Chains - 235/85 R16 and 7.5 R16 tyres (not shown) STC7664

Centre Cap

Bright Polished Finish - RRJ500060MUZ

Centre Cap

Sparkle Silver Finish - ANR2391MNH

Centre Cap

Sparkle Silver Finish - ANR2391MNH

Note: Alloy wheels are only suitable for vehicles with rear disc brakes.

PLEASE NOTE: When choosing vehicles fitted with specific wheel and tyre combinations or optional wheels and tyres, your intended use of the vehicle should be considered. Wheels with larger diameters and lower profile tyres will offer benefits in road holding and handling, but may be more vulnerable to damage in some off-road conditions, please discuss your requirements with your Land Rover Dealer when selecting your vehicle and specification.



Exterior styling, protection and lighting. The harshest environments on earth can take their toll on a vehicle. Even one as tough as Defender. Which is why a number of rugged accessories are available to safeguard against body damage.

Not only do A-Frame Protection Bars guard your Defender from inevitable scrapes and bumps, they also enhance the vehicle's appearance. Purpose-designed by Land Rover, these lightweight protection bars are manufactured in hardwearing, durable polymer. They are available to suit all requirements, including Defenders fitted with a winch or air conditioning. Additional driving lamps are available and headlamps can be kept safe with bespoke lamp guards. The Chequer Plate Protection Kit doesn't just provide extra style and add even more appeal to the outside of Defender, it prevents potential damage to the corners and sides of the vehicle too. Side Protection Runners ease entry and exit and help keep scuffs and scrapes away from doors and sills.



Chequer Plate Protection Kit

This Chequer Plate Protection Kit offers both style and protection to the corners and sides of the Defender. The kit features sill edge and rear corner protectors and two front bumper step plates. The kit is designed to complement the silver or black Wing Top Protectors.

Chequer Plate Protection Kit, for Defender 90, silver STC50245

Chequer Plate Protection Kit, for Defender 110SW - except HCPU - silver (not shown) STC50381

Chequer Plate Protection Kit, for Defender 110SW - except HCPU - black (not shown) EBN500051

Chequer Plate Protection Kit, for Defender 90SW - except HCPU - black (not shown) EBN500050

Please note: Front bumper step plates are not compatible with PIAA Driving Lamp Kit (LR006815)



Wing Top Protectors

These Wing Top Protectors, manufactured in an aluminium chequer plate design, enable access to roof racks and a potential viewing height advantage, without damage to panel or paintwork.

Wing Top Protectors - silver LR005230 (07MY onwards)

Wing Top Protectors - black LR005242 (07MY onwards)

Wing Top Protectors*, for RHD vehicles with aerial - silver STC7667

Wing Top Protectors*, for RHD vehicles with aerial - black EBN500060

Wing Top Protectors*, for vehicles without aerial - silver (not shown) STC7668

Wing Top Protectors*, for LHD vehicles with aerial - silver (not shown) STC7693

Wing Top Protectors*, for LHD vehicles with aerial - black (not shown) EBN500061

*Compatible with pre-07MY vehicles only



Side Protection Runners – New Style

Black, to fit 90 models LR008379

Black, to fit 110 models (not shown) LR008375

The sturdy steel design of these Side Protection Runners, enhances the appearance of your Defender as well as easing entry and exit. Available in black finish. The moulded rubber footgrips ensure non-slip stability.



Folding Rear Step

STC7632

Original equipment pattern spring-loaded folding step for all Defender models

Side Protection Runners – Twin Tube (shown right)

Side Protection Runners
- Twin Tube - stainless steel, to fit 90 model only VPLDP0006

Side Protection Runners
- Twin Tube - black, to fit 110 SW and Double Cab (not shown) VPLDP0004

Side Protection Runners
- Twin Tube - black, to fit 90 SW (not shown) VPLDP0005



Folding Side Step

STC7631

Spring-loaded folding step makes access to the interior of your Defender easier. For all Defender models

Rear Step Bumper (shown right)

This versatile Rear Step Bumper makes access to the load space easy as well as offering added protection from minor knocks, and also incorporates a dual height tow bracket.

Rear Step Bumper, 90 models
STC50269AA

Rear Step Bumper, 110 models
(not shown) STC50301





Raised Air Intake

LR008383

Ideal for dusty conditions, this raised air intake secures to the vehicle's 'A' post and also utilises the existing air intake vent fixings. Suitable for 300Tdi, Td5 and current 2.4 Diesel engines.

Please note: Not compatible with SVX Soft Top model.



A-Frame Protection Bar*

LR005235
 Manufactured from durable polymer, suitable for models with or without air conditioning except those fitted with a winch.

A-Frame Protection Bar*

(not shown)
 LR005742
 Manufactured from durable polymer, suitable for vehicles fitted with winch, (VUB500820) and models with or without air conditioning.

*Compliant to EEC Directive 2005/66



Ribbed Aluminium Undershield

LR008247
 A ribbed aluminium undershield provides protection when driving off-road.

Ribbed Aluminium Cover

(not shown) VPLDP0003
 Ribbed aluminium cover to update the old style Aluminium Undershield (STC50437 – shown on page 4) to the new style undershield (LR008247) using the existing brackets and fixings.



PIAA Driving Lamp Kit
LR006815
High Performance Bumper Mounted Driving Lamps, with covers, suitable for all vehicles but not compatible with hinged lamp guards, front bumper step plates and new Front Lighting Pack and Moulding Kit.



Front Lighting Pack (shown left)
Includes headlamp, main beam and indicator lamp.
Requires Moulding Kit LR008361.
RHD – with headlamp levelling - VPLDV0001
LHD – with headlamp levelling - VPLDV0003
RHD – without headlamp levelling - VPLDV0002
LHD – without headlamp levelling - VPLDV0004

Moulding Kit*
LR008361
Includes four bar grille and headlamp moulding surrounds.
*Not recommended for use with 9.5ti Electric Winch (VUB500820)

Hinged Lamp Guards*

These hinged lamp guards will help protect front and rear lenses from flying stones and low-speed impact, with an opening feature to enable easy lamp cleaning. Constructed from durable, black nylon-coated steel with plastic 'P' clips to help prevent corrosion. The guards are designed as horizontal slats to complement Defender's distinctive styling.

Hinged Lamp Guards - front pair†. Not compatible with headlamp power wash or new Front Lighting and Moulding Kit STC53161

Hinged Lamp Guards - rear pair††. For door mounted spare wheel. Not compatible with 235/265 tyres, and moulded wheel cover STC53157

Hinged Lamp Guards - rear pair††. Without door mounted spare wheel. (not shown) STC53158

Hinged Lamp Guard - single††. For door mounted spare wheel where access ladder with lamp guard is fitted (not shown) STC50448

*Compatible with 02MY vehicles onwards

Fixed Lamp Guards

These sturdy mesh style lamp guards offer cost effective protection for front and rear lenses.

Single Front Lamp Guard fits 90 and 110 (not shown) 345985†

Rear Lamp Guards, pair. Two sets required for each vehicle††.

Fits 90 and 110, except HCPU (not shown) VUB504110

Please note: † Not compatible with Moulding Kit (LR008361)

†† Not compatible with SVX models.



Hinged Lamp Guards - front pair STC53161



Hinged Lamp Guards - rear pair STC53157



Worklight

RTC8921AA

Enables your Defender to provide Floodlight style illumination when working in reduced light conditions. Fits both 90 and 110 models. Switches, cables and brackets are supplied in the kit.

Safari 5000 Lamps**

55W quartz halogen bulbs with powerful lens technology are an exclusive Land Rover design. The lamp body is impact resistant with an integrated removable stone guard. Available in both fog and driving light patterns.

Safari 5000 Driving Lamp - single STC8480

Safari 5000 Fog Lamp - single,

(not shown) STC8481 (pre-02MY)

Lamp Steady Bars - pair

(not shown) STC8814

Lamp Covers - pair

(not shown) STC50097

Rally 1000 Rimless Driving Lamps**

STC7644 (single)

Powerful and strong, this driving lamp is available with a removable stone guard featuring the Land Rover logo.

Lamp Covers - pair

(not shown) STC7661

Wiring Kits for Safari 5000

and Rally 1000 Lamps

RTC9586AA (pre-02MY)

Facia switch STC8870 (pre-02MY)

STC53208 (02MY onwards)



Driving Lamp Kit**

VUB500890

55W quartz halogen driving lamps with powerful clear lens technology and removable stone guard. Design exclusive to Land Rover.

Driving Lamp Kit Lamp Covers

- pair (not shown) VUS500010

**Compatible with pre-07MY vehicles only. Safari 5000, Rally 1000 and Driving Lamp Kit are not compatible with air conditioned vehicles.

Please note: All Supplementary Driving Lamps should only be illuminated under off-road conditions.





Carrying, towing and winching. Inevitably there are times when even Defender's agility over rough terrain and superb load carrying abilities require a boost. The range of premium carrying, towing and winching equipment enables Defender to transport bulky loads, to tow up to 3,500kg and pull itself over almost any obstacle, and out of trouble.



Luggage Box

VPLDR003

Lockable for security. Opens from both sides.
External dimensions: 1,600mm long, 960mm wide, 410mm high.
Volume 450 litres. Load capacity 54.8kg.

Aqua Sports Carrier

LR006846

Carries one surfboard or sailboard and mast, or one canoe or kayak.
Load capacity 45kg.

Sports Bar System

STC7582

A high leg design which extends the carrying potential for a variety of equipment. The sports bars can accommodate a range of attachments, including roof boxes and special carriers for the increasingly popular sports of skiing and windsurfing. Quick straps (STC7566) and load stops (RTC9477) are useful devices to make using the system even more effective and straightforward.

Sports Box

VPLDR0002

Lockable for security.
Can be mounted either way for kerbside opening in any country.
Internal retention system for skis or other long loads.
External dimensions: 2,300mm long, 620mm wide, 390mm high.
Volume 400 litres. Load capacity 56.3kg.

Ski and Snowboard Carrier
LR006849
Lockable for security.
Designed for use with
the sports bar system
(STC7582)
Carries four pairs of skis
or two snowboards.
Incorporates slider rails
for easy loading.
Load capacity 36kg.

Luggage Carrier
LR006848
Load capacity 62.6kg.





Expedition Roof Rack System

90 Hard Top/Station Wagon LR004101
110 Hard Top/Station Wagon (not shown) LR004100
110/130 Double Cab (not shown) LR004102

Finished in a tough nylon coating for improved corrosion resistance, this heavy duty rack system is available in 3 lengths to allow optimum user choice. Suitable for both on and off-road driving, the sturdy raised perimeter frame ensures secure load retention. The roof rack is secured by clamps direct to the roof gutter, and can easily be removed when not required. Four off-road driving lamp brackets are provided at the front and a worklight (RTC8921AA) bracket provided at the rear.

Ratchet Strap

(not shown) CAR500010
Nylon tie strap for securing items to the Crossbars, Luggage Carrier or Expedition Roof Rack System. 5m long, 20mm wide, supplied individually.



Two Part Ladder

AGP710010
For use with expedition roof racks LR004100, LR004101 and LR004102.

Access Ladder*

STC50417
With integrated lamp guard.
*Not compatible with SVX models.



9.5ti Electric Winch*

VUB500820

Rated capacity of 9,500lb/4,310kg. 38m x 8mm diameter wire rope.

This powerful electric winch is designed to fit easily to the front of your Defender, even if the air conditioning option is fitted. Offering maximum reliability for all general winching and self recovery requirements, the winch is available as a complete vehicle kit, ensuring specification and installation are straightforward.

Features include:

- Fully reversible power for two-way winching
- Remote control operation, with 3.7m/12' cable
- Fully automatic load actuated braking system
- Tough replacement bumper/winch mounting designed to cope with heavy duty usage
- Sealed-for-life, water resistant winch gear housing
- Kit includes winch, mounting brackets, remote control, electrics safety cut-out switch and fixings.

*Not recommended for use with Moulding Kit (LR008361)





Multi-height Tow Bars

This cost-effective design gives a range of towing heights to suit different trailers. The kit contains a towing armature, multi-height face plate and 50mm tow ball.

Multi-height Tow Bar, for 90 vehicles from Nov 1998 (not shown) LR006309

Multi-height Tow Bar, for 110 vehicles (except HCPU) from Nov 1998 LR006310

Multi-height Tow Bar, for 130 and HCPU vehicles from Nov 1998 (not shown) LR006312



Combination Tow Ball/Jaw Unit

LR008244
50mm tow ball and jaw combination for increased towing versatility and a 3,500kg load capacity.

Tow Jaw

KNB100640 (not shown)
Tow Jaw with a 3,500kg load capacity.



Tow Hitch

50mm Tow Ball RTC8891AA



Adjustable Tow Bars

This tow bar copes with different trailer coupling heights without the need for any tools. The kit contains the towing armature and slider plate.

Adjustable Tow Bar, for 90 vehicles from Nov 1998 LR007221

Adjustable Tow Bar, for 110 vehicles (except HCPU) from Nov 1999 (not shown) LR007222

Adjustable Tow Bar, for 130 and HCPU vehicles from Nov 1998 (not shown) LR007223

Locking Slider Pin

STC53017 (not shown)
Provides security for adjustable slider plate.



Tow Strap

STC8919AA

Constructed from hard-wearing polyester webbing with a safety hook at each end, the tow strap will cope with loads of up to 3,000kg (6,600lb). The tow strap is stored in its own reflective, wipe-clean stowage bag, which will double up as a warning flag in the middle of the strap, when on-road, or can be folded around the strap for off-road towing.

HOW TO CHOOSE YOUR TOWING ELECTRICS

The 'N' Type Towing Electrics Kit powers the rear/brake lamps, direction indicators and will also serve the trailer Lighting Board (not shown) STC8153. If you require further power for your trailer or caravan, 'S' Type or 13 Pin Towing Electrics can be selected, depending upon the socket type of your trailer. For further assistance speak to your Land Rover Dealer.



'N' Type Towing Electrics*
LR005920

For supplying power to trailer lighting. The 'N' Type Towing Electrics supply the rear lamps, brake lamps, direction indicators and rear fog lamp(s). It will also power a lighting board.



'S' Type Towing Electrics*
LR005921

For use when additional trailer power is required such as for a horse box or caravan with interior lighting. The 'S' Type Towing Electrics provide interior equipment power, including fridge feed and caravan battery charging.

Note: Not compatible with standard fitted 12N sockets. Must be used in conjunction with 'N' Type Towing Electrics LR005920



13 Pin Towing Electrics*
LR005919

European style towing electrics, capable of supplying all trailer rear lighting and interior equipment power, including fridge feed and battery charging.

***Please note:** These accessories are not suitable for Caravans, Trailers or Lighting Boards fitted with rear mounted LED Lamps.



Interior. Inside Defender you never need to compromise on practicality or comfort or technology.

Easy-fit Waterproof Seat Covers are, unsurprisingly, among the most popular accessories and save upholstery from dirt and wear and tear. A Cargo Barrier keeps special loads safe and secure, and Rubber Mats help protect the footwell areas. You can also benefit from an advanced Audio Connectivity System which now connects with your iPod.

iPod is a trademark of Apple Inc., registered in the U.S. and other countries



Loadspace Protector

Manufactured from a tough acrylic material, moulded to fit the contours of the loadspace area.
 Loadspace Protector, for 90 SW/HT (shown) and 110 SW/HT (not shown) not compatible with 2nd row 90 and 3rd row 110 seats fitted LR005081 (07MY)
 Loadspace Protector, for 90 SW RTC8936AA (pre-07MY)
 Loadspace Protector, for 110 SW, only suitable with bench type rear seats (not shown) RTC8935 (pre-07MY)

Loadspace Rubber Mat

Protects the loadspace floor from water, mud, and general wear and tear.
 Loadspace Rubber Mat*, for 110 SW LR005040 (with 3rd row seats)
 Loadspace Rubber Mat*, for 90 SW (not shown) LR005615 (with 2nd row seats)
 Loadspace Rubber Mat*, for 90 HT (not shown) LR005614
 Loadspace Rubber Mat*, for 110 SW (not shown) LR005613 (without 3rd row seats)
 Loadspace Rubber Mat, for 90 HT (not shown) STC7619 (pre-07MY)
 Loadspace Rubber Mat, for 110 HT (not shown) STC7620 (pre-07MY)
 Loadspace Rubber Mat, for 90 SW, (not shown) STC50491 (pre-07MY)
 Loadspace Rubber Mat, for 110 SW (not shown) STC7899 (pre-07MY)
 *07MY onwards



Cargo Barrier

Designed to prevent cargo and luggage from entering the passenger compartment. Manufactured in nylon coated steel and easy to remove when not required.
 Cargo Barrier* - 110 SW LR006447 (07MY only)
 Cargo Barrier* - 90/110 HT (not shown) LR006785 (07MY only)
 Cargo Barrier* - 90 SW (not shown) LR006448 (07MY only)
 Cargo Barrier* - black mesh, for 90 bulkhead deleted vehicles (not shown) STC50479 (02MY onwards)
 Cargo Barrier* - black mesh, for 110 SW, not 12 seat (not shown) VUB500510
 Cargo Barrier - grey mesh, for 110 SW, 12 seat only (not shown) STC7555
 Cargo Barrier - grey mesh, for 90 HT/SW and 110 HT except bulkhead deleted vehicles (not shown) RTC8095
 *ECE R17 compliant

Rubber Mats

Moulded to fit footwell areas, these mats feature a perimeter wall design that helps prevent spillage of mud and water from reaching the interior carpet.

Front Footwell Rubber Mats

LR005039 (07MY)
 For 90 and 110 vehicles (not shown) STC50172 (pre-07MY)



Cubby Box

LR008788
 This strong, useful, cubby box is designed to fit between the front seats. Trimmed in black vinyl. Includes moulded dual drinks holder and fixings.

Rear Footwell Rubber Mats

2nd row 110 SW and Double Cab LR005041 (07MY)
 2nd row 130 Double Cab/HCPU (not shown) LR005042 (07MY)
 For 110 vehicles (not shown) STC50173 (pre-07MY)





Cosy Tot Premium Infant Carrier*
 VPLMS0007
 For babies 0-13kg (approximately 0-9 months).
 Includes sun/wind canopy.
 Padded machine washable cover.
 Rearward-facing on rear seat.
 Rear outboard seating position only.



Duo Plus Child Seat*
 LR006637
 For children 9-18kg (approximately
 9 months – 4 years). 5 point harness
 with an Adjusta-fit System.
 Padded machine washable cover.
 Forward-facing on rear seat.
 Includes top tether safety harness.



Evolva 2-3 Ultra Booster Seat*
 LR004940
 For children 15-36kg (approximately 4-11 years).
 Height adjustable two-part seat ensures correct
 seatbelt position. Improved side impact protection.
 Padded machine washable cover.



Recaro Front Seat Kit**
 RH VPLDS0035PUY
 LH VPLDS0036PUY
 Heated seat† with cloth facings and leather surround featuring
 Land Rover and Recaro embossed logos. Installation kit included.
 Not compatible with vehicles fitted with a bulkhead or 90 bulkhead
 deleted vehicles with jack stowage brackets behind the front seats.

Please note: Applicable from Vehicle Identification Numbers (VIN)
 WA138480 110 SW, 110 and 130 Double Cab and 9A773310
 90 vehicles with bulkhead deleted.

** Available mid 2009
 † Heated seat feature only compatible with vehicles fitted with
 heated seat option.

*Children are safer when correctly restrained in the rear of a vehicle. **Please note:** All seat cover patterns and colours are periodically updated.



Waterproof Seat Covers

Protects Defender seats from wet, dirty clothes and general wear and tear. Easy to fit, and when not in use, the covers can be stored away in their own carry bag. Seat covers have been treated to meet automotive flammability standards.

Waterproof Seat Covers* - black - 1st row VPLDS0011

Waterproof Seat Covers* - black - 2nd row 110 and 130 (not shown) VPLDS0012

Waterproof Seat Covers* - black - 2nd row 90, 3rd row 110 (not shown) VPLDS0013

Waterproof Seat Covers* - grey - 1st row (not shown) LR005128

Waterproof Seat Covers* - grey - 2nd row 110 and 130 (not shown) LR007925

Waterproof Seat Covers* - grey - 2nd row 90, 3rd row 110 (not shown)

LR005126

Waterproof Seat Covers - grey - front outer pair (not shown) STC8178AA

Waterproof Seat Covers - grey - front set of three (not shown) STC8179AA

Waterproof Seat Covers - grey - middle set of three (not shown) STC8180AA

Waterproof Seat Covers - grey - inward facing set of four, 90 and 110 9/10 seaters (not shown) STC8181AA

Waterproof Seat Covers - grey - rear side bench pair (not shown) STC8182AA

Waterproof Seat Covers - grey - 60/40 split rear bench pair (not shown)

STC8183AA

Waterproof Seat Covers - grey - rear bench pair for 110, 12 seater (not shown)

STC7637AA

Waterproof Head Restraint Covers STC50480 (pre-07MY)

*07MY onwards includes Waterproof Head Restraint Covers



Audio Connectivity System

LR007467

Discreet link lead installation to integrate iPod Nano Gen 1, 2 and 3, iPod Video 30 + 60 + 80Gb, Classic, iPhone and iPod Touch into the vehicle audio speaker system. In addition the link lead also acts as a charger for your iPod device.

* iPod not included



Land Rover Watch Stolen Vehicle Tracking System

Advanced System

(not shown)

VPLDV0016

Driver Recognition Tag

(not shown)

VPLDV0015

Standard System

(not shown)

LR003082

Installation Kit

(not shown)

VUB504490

Consult your Land Rover Dealer for further details.

Please note: Land Rover Watch is not available in all markets.

Radio and Single CD

(not shown)

XQE500350

Radio, Single CD and MP3 Connectivity

(not shown)

XQE500360



TOURING ACCESSORIES

Warning Triangle

(not shown)

KCC500021

Vital in emergencies and a legal requirement in much of mainland Europe. Supplied in its own moulded storage box.

First Aid Kit

(not shown)

STC7642

Aids in the treatment of cuts and grazes.

Fire Extinguisher (1kg)

(not shown)

STC8529AA

Supplied with mounting bracket.

Fire Extinguisher (2kg)

(not shown)

STC8138AB

Supplied with mounting bracket.

Tool Kit

(not shown)

STC8244AB

High quality tools for basic maintenance, conveniently stored in a moulded box.

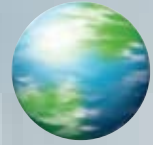
Foot Pump

(not shown) STC8243

Touch-up Paints

(not shown)

A comprehensive range of touch-up paint sticks and aerosols to help your Defender look as good as new despite those minor chips and scrapes. Speak to your Land Rover Dealer for details.



landrover.com/ourplanet

Our commitment is to a sustainable future. Everything from the design of our vehicles and the way we build them, to how and where we use them and, at the end of their life, to how they can be safely disposed of, Land Rover is committed to a sustainable future. We're committed to reducing our impact on the environment and are working in four key areas.



e_TERRAIN TECHNOLOGIES.

In 2007 we announced a joint investment into new technologies to improve the environmental performance of our vehicles. This joint investment now stands at £800m. Building on the innovation of the Land_e concept, the first of these technologies is the Stop/Start engine in our diesel manual Freelander 2. In 2008 we revealed our new concept vehicle, the LRX; a Land Rover in body and spirit but conceived as a hybrid 2.0 litre diesel with potential CO₂ emissions of 120g/km.



SUSTAINABLE MANUFACTURING.

World class manufacturing facilities. Certified to ISO14001 since 1998. Our manufacturing facilities at Solihull and Halewood have reduced emissions by around 4 percent year on year, over the last 5 years. Our TDV6 and TDV8 engines are assembled in the Dagenham Diesel Centre which is powered by wind turbines. Total energy used in manufacturing each vehicle has been reduced by 19 percent since 2002. While water use per vehicle has been cut by 14 percent in the same period. We're also offsetting all CO₂ emissions by the manufacturing assembly of Land Rover vehicles at both plants. Partnered with specialist organisation Climate Care, our offset projects include a wind farm in China and hydro electric generators in Tajikistan. In addition, Land Rover vehicles are now designed to be 85 percent recyclable with all current models meeting the European End of Life Vehicles Directive. Sustainable and recyclable materials play an important role too: Freelander 2 contains 10 percent recycled and 10 percent renewable materials.



CO₂ OFFSETTING in 2006, in the UK, we launched a pioneering programme for customers, independently administered by Climate Care, to offset CO₂ emissions for the first 45,000 miles (72,000 km) of all new Land Rovers. This programme is being rolled out progressively to other countries around the world. We're also the first automotive company to offset 100 percent of our manufacturing assembly CO₂ emissions.

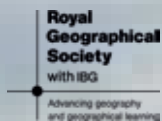


GLOBAL CONSERVATION AND HUMANITARIAN PROJECTS.

Land Rover vehicles are used by conservation and humanitarian organisations worldwide and are often first choice for difficult tasks. Organisations include the Born Free Foundation, Biosphere Expeditions, Royal Geographical Society (with IBG), China Exploration and Research Society and Earthwatch Institute. Our projects are diverse, ranging from an initiative to help with the protection of rare wolves in Ethiopia, to a project funded by our CO₂ offset programme which provides efficient cooking stoves to rural parts of Uganda.

Our planet. We take our responsibility to our planet very seriously. Our vehicles are designed for purpose. As part of our Fragile Earth policy Land Rover has actively promoted responsible off-road driving since 1990. Our Experience Centres teach drivers to understand the full potential and unique breadth of capability of their vehicles while reducing impact on nature and the environment, in a wide range of activities.

To find out more, and to see our progress, visit www.landrover.com/ourplanet



www.landrover.com

All Land Rover Approved Accessories fitted by a Land Rover Dealer within one month or 1,000 miles/1,600 kilometres (which ever occurs first) of the handover of a new vehicle will benefit from the same warranty terms and period of cover as the vehicle warranty. Accessories purchased outside of these parameters will be subject to 12 month unlimited mileage warranty. All Land Rover Approved Accessories are rigorously tested to the same exacting standards as those applied to our vehicles. Performance in extreme hot and cold temperatures, corrosion resistance, impact and airbag deployment highlight some of the exhaustive product testing carried out to ensure accessories are both durable and importantly, continue to comply with current legislation. All our accessories are designed to be an integral part of Land Rover vehicles. While many items such as roof carriers are simple to fit, some products require specialist tools and diagnostic equipment to ensure correct integration with the vehicle structure and electrical systems.

This publication is intended for international usage and whilst Land Rover take the utmost care in ensuring that all details in the publication are correct at the time of going to press, we are constantly striving for improvement and therefore reserve the right to alter specifications and equipment without notice. Details of specifications and equipment are also subject to change to suit local market conditions and requirements, and not all products are available in every market. Some vehicles are shown with accessories or optional equipment fitted. These products vary from market to market, please consult your Land Rover Dealer who will be pleased to advise you on current specifications. Distributors and Dealers are not agents of Land Rover and have absolutely no authority to bind Land Rover to any express or implied undertaking or representation.



Mixed Sources

Product group from well-managed forests, controlled sources and recycled wood or fiber

www.fsc.org Cert no. SGS-COC-003148
© 1996 Forest Stewardship Council



Please recycle this brochure after use

LAND ROVER Registered Office:
Banbury Road, Gaydon, Warwick CV35 0RR, United Kingdom.
Registered in England and Wales: Number 4019301
www.landrover.com

© Land Rover 2009. Publication Number: LRML 2518/09



BY APPOINTMENT
TO HM THE QUEEN
MANUFACTURERS OF
LAND ROVER VEHICLES
LAND ROVER, WARWICK



BY APPOINTMENT
TO HRH THE DUKE OF EDINBURGH
MANUFACTURERS OF
LAND ROVER VEHICLES
LAND ROVER, WARWICK



BY APPOINTMENT
TO HRH THE PRINCE OF WALES
MANUFACTURERS OF
LAND ROVER VEHICLES
LAND ROVER, WARWICK



GO BEYOND